

# ATSEVO

**ANCORANTE  
PESANTE  
DI SICUREZZA  
HEAVY DUTY  
SAFETY BOLT**

**CON CERTIFICAZIONE  
SISMICA  
WITH SEISMIC  
CERTIFICATION**



**CARICHI DINAMICI E SISMICI  
DYNAMIC AND SEISMIC LOADS**



**ELEVATA RESISTENZA AL TAGLIO  
HIGH SHEAR RESISTANCE**



**VITE cl. 8.8  
SCREW grade 8.8**

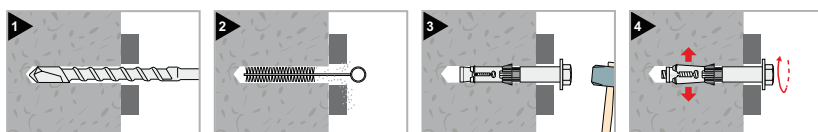


**FRIULSIDER**  
YOUR FIXING FACTORY

## ATS-evo S

**Ancorante pesante di sicurezza con certificazione sismica**

Heavy duty safety bolt with seismic certification



### CERTIFICAZIONI CERTIFICATIONS

**Prestazione sismica C1 e C2**

Seismic performance C1 and C2

**Calcestruzzo fessurato**

Cracked concrete

**Resistenza al fuoco R120**

Fire resistance R120



**Vite TE cl. 8.8**  
**Zincato bianco**

Hex head screw grade 8.8  
White zinc plated

Cod.	Tipo Type	Tassello Plug Ø x L	Vite Screw	Chiave Wrench	Sp. fissabile Fixing thickness max	Conf. Pkg.
79302b10070 <sup>(1)</sup>	10/10-M6	10x70	M6	10	10	50
79302b10080 <sup>(1)</sup>	10/20-M6	10x80	M6	10	20	50
79302b10110 <sup>(1)</sup>	10/50-M6	10x110	M6	10	50	50
79302b12080	12/10-M8	12x80	M8	13	10	25
79302b12090	12/20-M8	12x90	M8	13	20	25
79302b12120	12/50-M8	12x120	M8	13	50	25
79302b15090	15/10-M10	15x90	M10	17	10	20
79302b15100	15/20-M10	15x100	M10	17	20	20
79302b15130	15/50-M10	15x130	M10	17	50	20
79302b15180	15/100-M10	15x180	M10	17	100	20
79302b18110	18/10-M12	18x110	M12	19	10	20
79302b18125	18/25-M12	18x125	M12	19	25	20
79302b18150	18/50-M12	18x150	M12	19	50	20
79302b18200	18/100-M12	18x200	M12	19	100	20
79302b24125	24/10-M16	24x125	M16	24	10	10
79302b24140	24/25-M16	24x140	M16	24	25	10
79302b24165	24/50-M16	24x165	M16	24	50	10
79302b24215	24/100-M16	24x215	M16	24	100	10
79302b28160	28/10-M20	28x155	M20	30	10	4
79302b28180	28/30-M20	28x175	M20	30	30	4
79302b28210	28/60-M20	28x205	M20	30	60	4
79302b28250	28/100-M20	28x245	M20	30	100	4
79302b32180	32/10-M24	32x175	M24	36	10	4
79302b32200	32/30-M24	32x195	M24	36	30	4
79302b32230	32/60-M24	32x225	M24	36	60	4

<sup>(1)</sup> Solo certificazione categoria sismica C1 / Seismic certification category C1 only

UTILIZZATO NEL / USED IN

**KIT SHD + ATS-evo**

Vedi/See p. 282



**SHD**

**SISTEMA DI FISSAGGIO  
PER EDIFICI IN LEGNO IN AREA SISMICA**  
FIXING SYSTEM FOR  
WOODEN BUILDINGS IN SEISMIC AREAS

**FISSAGGI CON  
CERTIFICAZIONE SISMICA**  
FIXINGS WITH  
SEISMIC CERTIFICATION

Vedi/See p. 8-9

**SEISMIC**

www.friulsider.com

**FRIULSIDER 23**  
2022



## ATS-evo B

**Ancorante pesante di sicurezza con certificazione sismica**  
 Heavy duty safety bolt with seismic certification



### CERTIFICAZIONI CERTIFICATIONS

**Prestazione sismica C1 e C2**  
 Seismic performance C1 and C2

**Calcestruzzo fessurato**  
 Cracked concrete

**Resistenza al fuoco R120**  
 Fire resistance R120

**Barra filettata cl. 8.8**  
**Dado esagonale cl. 8**  
**Zincato bianco**

Threaded bar grade 8.8  
 Hex nut grade 8  
 White zinc plated



Cod.	Tipo Type	Tassello Plug Ø x L	Barra Bar	Chiave Wrench	Sp. fissabile Fixing thickness max	Conf. Pkg.
79402b10080 <sup>(1)</sup>	10/20-M6	10x80	M6	10	20	50
79402b10110 <sup>(1)</sup>	10/50-M6	10x110	M6	10	50	50
79402b12080	12/10-M8	12x80	M8	13	10	25
79402b12090	12/20-M8	12x90	M8	13	20	25
79402b12120	12/50-M8	12x120	M8	13	50	25
79402b15090	15/10-M10	15x90	M10	17	10	20
79402b15100	15/20-M10	15x100	M10	17	20	20
79402b15130	15/50-M10	15x130	M10	17	50	20
79402b15180	15/100-M10	15x180	M10	17	100	20
79402b18125	18/25-M12	18x125	M12	19	25	20
79402b18200	18/100-M12	18x200	M12	19	100	20
79402b24125	24/10-M16	24x125	M16	24	10	10
79402b24140	24/25-M16	24x140	M16	24	25	10
79402b24165	24/50-M16	24x165	M16	24	50	10
79402b24215	24/100-M16	24x215	M16	24	100	10
79402b28160▲	28/10-M20	28x155	M20	30	10	4
79402b28180▲	28/30-M20	28x175	M20	30	30	4
79402b28210▲	28/60-M20	28x205	M20	30	60	4
79402b28250▲	28/100-M20	28x245	M20	30	100	4
79402b32180▲	32/10-M24	32x175	M24	36	10	4
79402b32200▲	32/30-M24	32x195	M24	36	30	4
79402b32230▲	32/60-M24	32x225	M24	36	60	4

<sup>(1)</sup> Solo certificazione categoria sismica C1 / Seismic certification category C1 only

## ATS-evo SK

**Ancorante pesante di sicurezza con certificazione sismica**  
 Heavy duty safety bolt with seismic certification



### CERTIFICAZIONI CERTIFICATIONS

**Prestazione sismica C1 e C2**  
 Seismic performance C1 and C2

**Calcestruzzo fessurato**  
 Cracked concrete

**Resistenza al fuoco R120**  
 Fire resistance R120

**Vite TPSEI cl. 8.8**  
**Zincato bianco**

Hex socket countersunk head  
 screw grade 8.8  
 White zinc plated

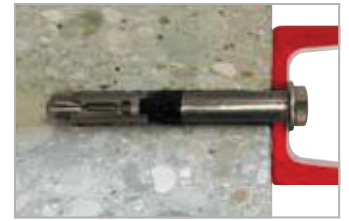
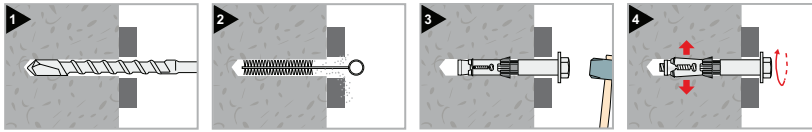
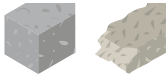


Cod.	Tipo Type	Tassello Plug Ø x L	Vite Screw	Chiave Wrench	Sp. fissabile Fixing thickness max	Conf. Pkg.
79303b10070 <sup>(1)</sup>	10/15-M6	10x70	M6	5	15	50
79303b10080 <sup>(1)</sup>	10/25-M6	10x80	M6	5	25	50
79303b12080	12/16-M8	12x80	M8	6	16	25
79303b12090	12/26-M8	12x90	M8	6	26	25
79303b12120	12/56-M8	12x120	M8	6	56	25
79303b15090	15/17-M10	15x90	M10	8	17	20
79303b15100	15/27-M10	15x100	M10	8	27	20
79303b18125	18/33-M12	18x125	M12	10	33	20

<sup>(1)</sup> Solo certificazione categoria sismica C1 / Seismic certification category C1 only

## ATS-evo S INOX A4

**Ancorante pesante di sicurezza**  
 Heavy duty safety bolt



**Inox A4**  
**Vite TE**

Stainless steel A4  
 Hex head screw

Cod.	Tipo Type	Tassello Plug Ø x L	Vite Screw	Chiave Wrench	Sp. fissabile Fixing thickness max	Conf. Pkg.
79302012090▲	12/20-M8	12x90	M8	13	20	25

Codice non certificato CE / Code not covered by CE certification

## ATS-evo SK INOX A4

**Ancorante pesante di sicurezza**  
 Heavy duty safety bolt



**Inox A4**  
**Vite TPSEI**

Stainless steel A4  
 Hex socket countersunk head screw

Cod.	Tipo Type	Tassello Plug Ø x L	Vite Screw	Chiave Wrench	Sp. fissabile Fixing thickness max	Conf. Pkg.
79303012090▲	12/26-M8	12x90	M8	6	26	25

Codice non certificato CE / Code not covered by CE certification



**YOUR  
 FIXING  
 SCHOOL**

[www.friulsider.com/it/faq](http://www.friulsider.com/it/faq)

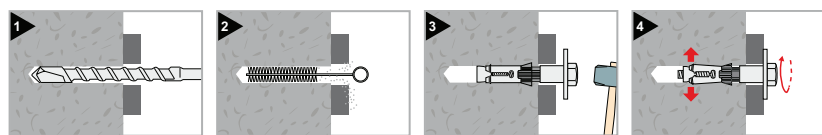
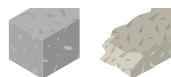
[www.friulsider.com/en/faq](http://www.friulsider.com/en/faq)

**FRIULSIDER** 25  
 2022



## ATS-evo R

**Fissaggio speciale pesante per ancoraggio di lastre prefabbricate a spessore ridotto**  
**Special heavy duty fixing for the anchoring of thin precast panels**



**Posa ridotta per installazione su lastre di spessore sottile**

Reduced embedment depth for installation on thin panels

**Vite acciaio alta resistenza**

High resistance steel screw

**Anche in versione 3DG**

**elevata resistenza alla corrosione**

Also available in 3DG version  
 high resistance to corrosion

**Marchatura in testa per un immediato riconoscimento anche dopo la posa**

Marking on head for immediate recognition even after installation



Cod.	Tipo Type	Tassello Plug Ø x L	Vite Screw	Chiave Wrench	Sp. fissabile Fixing thickness max	Conf. Pkg.
79309b18090▲	18/12-M12	18x90	M12	22	12	20

Codice non certificato CE / Code not covered by CE certification

**Vite TE cl. 10.9**

**Zincato bianco**

**Rondella maggiorata Ø44x4 DIN 440**

Hex head screw grade 10.9

White zinc plated

Large washer Ø44x4 DIN 440

## 3DG COATING

**Vite TE cl. 10.9**

**Speciale rivestimento anticorrosione con finitura opaca**

**Rondella maggiorata Ø44x4 DIN 440**

Hex head screw grade 10.9

Special anti-corrosion coating with matte finish

Large washer Ø44x4 DIN 440



Cod.	Tipo Type	Tassello Plug Ø x L	Vite Screw	Chiave Wrench	Sp. fissabile Fixing thickness max	Conf. Pkg.
79309r18090▲	18/12-M12	18x90	M12	22	12	20

Codice non certificato CE / Code not covered by CE certification



# YOUR FIXING EXPERT



[friulsider.com](http://friulsider.com)

**FRIULSIDER**  
YOUR FIXING FACTORY



# FM 753 CRACK

**ANCORANTE  
PESANTE  
PASSANTE  
HEAVY DUTY  
THROUGH ANCHOR**

**CON CERTIFICAZIONE  
SISMICA  
WITH SEISMIC  
CERTIFICATION**

✓  
**CARICHI DINAMICI E SISMICI  
DYNAMIC AND SEISMIC LOADS**

✓  
**ESPANSIONE IMMEDIATA  
IMMEDIATE EXPANSION**

✓  
**PERNO BONIFICATO cl. 9.8  
FASCETTA INOX A4  
HARDENED AND TEMPERED STEEL BODY  
grade 9.8 - STAINLESS STEEL A4 CLIP**

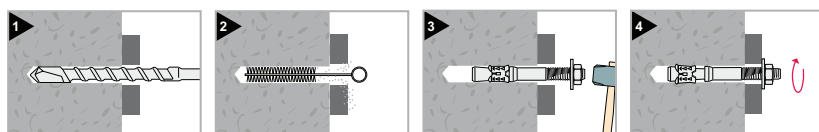


**FRIULSIDER**  
YOUR FIXING FACTORY



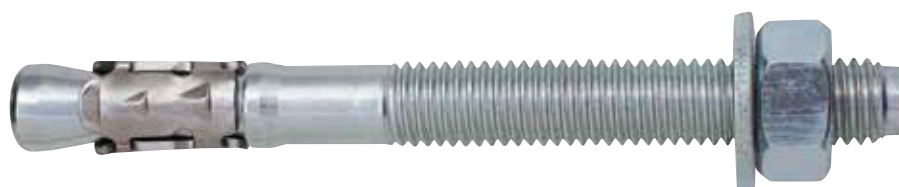
## FM-753 CRACK 3DG

**Ancorante pesante passante con certificazione sismica**  
**Heavy duty through anchor with seismic certification**



### CERTIFICAZIONI CERTIFICATIONS

**Prestazione sismica C1 e C2**  
 Seismic performance C1 and C2  
**Calcestruzzo fessurato**  
 Cracked concrete  
**Resistenza al fuoco R120**  
 Fire resistance R120



### Assemblato

**Perno bonificato cl. 9.8**

**Fascetta inox A4**

**Speciale rivestimento anticorrosione  
con finitura brillante**

Assembled

Hardened and tempered

anchor body grade 9.8

Stainless steel A4 clip

Special anti-corrosion coating  
with glossy finish

Cod.	Dim. Ø x L	Lunghezza filetto Thread length	Spessore max fissabile per posa Fixing thickness for embedment depth			Conf. Pkg.	Imballo Outerbox
			NEW Ridotta Reduced	Standard			
75350b08068 <sup>(1)</sup>	M8x68	30	18	4	100	400	
75350b08075 <sup>(1)</sup>	M8x75	30	24	10	100	400	
75350b08090 <sup>(1)</sup>	M8x90	40	39	25	100	400	
75350b08115 <sup>(1)</sup>	M8x115	60	64	50	100	400	
75350b08135 <sup>(1)</sup>	M8x135	80	84	70	100	400	
75350b08165 <sup>(1)</sup>	M8x165	80	114	100	50	200	
75350b10090	M10x90	40	30	10	50	200	
75350b10105	M10x105	55	45	25	50	200	
75350b10115	M10x115	55	55	35	50	200	
75350b10135	M10x135	85	75	55	50	200	
75350b10155	M10x155	85	95	75	50	200	
75350b10185	M10x185	85	125	105	25	100	
75350b12110	M12x110	65	30	10	50	200	
75350b12120	M12x120	65	40	20	50	200	
75350b12145	M12x145	85	65	45	25	100	
75350b12170	M12x170	85	90	70	25	100	
75350b12200	M12x200	85	120	100	25	100	
75350b16130	M16x130	65	30	10	20	80	
75350b16150	M16x150	85	50	30	20	80	
75350b16185	M16x185	85	80	60	20	80	
75350b16220	M16x220	85	120	100	15	60	

<sup>(1)</sup> Solo certificazione categoria sismica C1 / Seismic certification category C1 only

**Speciale rivestimento anticorrosione  
resistenza alla corrosione in nebbia  
salina fino a 1000 ore**

Special anti-corrosion coating  
up to 1000 hours in salt spray test

Vedi/See p. 6-7

# 3DG COATING

[www.friulsider.com](http://www.friulsider.com)

TRIPLE DIFFUSION GALVANIZATION

**FISSAGGI CON  
CERTIFICAZIONE SISMICA**  
 FIXINGS WITH  
 SEISMIC CERTIFICATION

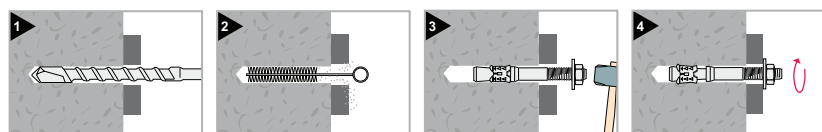
Vedi/See p. 8-9

# SEISMIC

[www.friulsider.com](http://www.friulsider.com)

## FM-753 CRACK INOX A4

**Ancorante pesante passante con certificazione sismica**  
**Heavy duty through anchor with seismic certification**



### CERTIFICAZIONI CERTIFICATIONS

#### Prestazione sismica C1 e C2

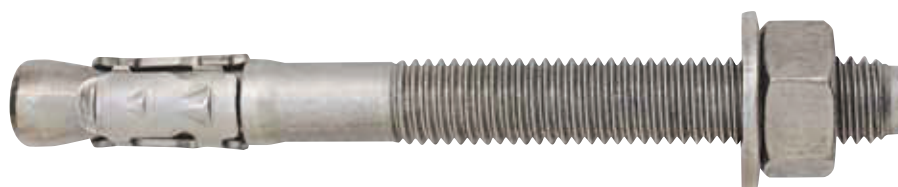
Seismic performance C1 and C2

#### Calcestruzzo fessurato

Cracked concrete

#### Resistenza al fuoco R120

Fire resistance R120



#### Assemblato Inox A4

Assembled  
Stainless steel A4

Cod.	Dim. Ø x L	Lunghezza filetto Thread length	Sp. fissabile Fixing thickness max	Conf. Pkg.	Imballo Outerbox
75350008068 <sup>(1)</sup>	M8x68	30	4	100	400
75350008075 <sup>(1)</sup>	M8x75	30	10	100	400
75350008090 <sup>(1)</sup>	M8x90	40	25	100	400
75350008115 <sup>(1)</sup>	M8x115	60	50	100	400
75350008135 <sup>(1)</sup>	M8x135	80	70	100	400
75350008165 <sup>(1)</sup>	M8x165	80	100	50	200
75350010090	M10x90	40	10	50	200
75350010105	M10x105	55	25	50	200
75350010115	M10x115	55	35	50	200
75350010135	M10x135	85	55	50	200
75350010155	M10x155	85	75	50	200
75350010185	M10x185	85	105	25	100
75350012110	M12x110	65	10	50	200
75350012120	M12x120	65	20	50	200
75350012145	M12x145	85	45	25	100
75350012170	M12x170	85	70	25	100
75350012200	M12x200	85	100	25	100
75350016130	M16x130	65	10	20	80
75350016150	M16x150	85	30	20	80
75350016185	M16x185	85	60	20	80
75350016220	M16x220	85	100	15	60

<sup>(1)</sup> Solo certificazione categoria sismica C1 / Seismic certification category C1 only

Download:  
[www.friulsider.com](http://www.friulsider.com)

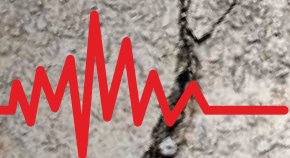


# FIXCALC

ENGINEERING SOFTWARE

[www.friulsider.com](http://www.friulsider.com)

30 **FRIULSIDER**  
2022



# SEISMIC

**FISSAGGI CON  
CERTIFICAZIONE SISMICA**  
**FIXINGS WITH  
SEISMIC CERTIFICATION**

Vedi/See p. 8-9



# FM753

**ANCORANTE  
PESANTE PASSANTE  
HEAVY DUTY  
THROUGH ANCHOR**



**AMPIA GAMMA  
WIDE RANGE**



**FACILE INSTALLAZIONE  
EASY INSTALLATION**



**VERSATILE  
VERSATILE**

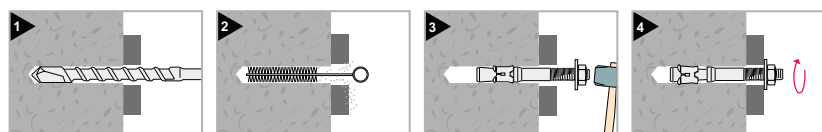


**FRIULSIDER**  
YOUR FIXING FACTORY



## FM-753

**Ancorante pesante passante**  
Heavy duty through anchor

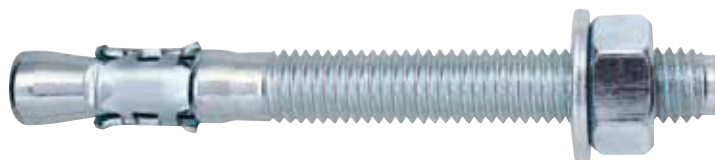


**CERTIFICAZIONI**  
CERTIFICATIONS

**Calcestruzzo non fessurato**  
Non-cracked concrete

**Assemblato**  
**Zincato bianco**

Assembled  
White zinc plated



Cod.	Dim. Ø x L	Lunghezza filetto Thread length	Sp. fissabile Fixing thickness max	Conf. Pkg.	Imballo Outerbox
75320b06045 <sup>(1)(2)</sup>	M6x45	20	3	200	2000
75320b06065	M6x65	40	15	100	1000
75320b06085	M6x85	60	35	100	1000
75320b06100	M6x100	60	50	50	500
75320b08050 <sup>(1)(2)</sup>	M8x50	23	5	100	1000
75320b08065	M8x65	38	7	100	1000
75320b08075	M8x75	48	15	100	400
75320b08090	M8x90	63	30	100	400
75320b08115	M8x115	83	55	100	400
75320b08135	M8x135	88	75	100	400
75320b08165	M8x165	88	105	50	200
75320b10060 <sup>(1)(2)</sup>	M10x60	28	5	50	500
75320b10075	M10x75	43	5	50	500
75320b10090	M10x90	55	20	50	200
75320b10100	M10x100	60	30	50	200
75320b10120	M10x120	85	50	50	200
75320b10145	M10x145	85	75	50	200
75320b10170	M10x170	85	100	50	200
75320b10210 <sup>(2)</sup>	M10x210	85	140	25	100
75320b12080 <sup>(1)(2)</sup>	M12x80	40	7	50	200
75320b12100	M12x100	58	10	50	200
75320b12110	M12x110	68	20	50	200
75320b12120	M12x120	68	30	25	100
75320b12135	M12x135	93	45	25	100
75320b12160	M12x160	93	70	25	100
75320b12185	M12x185	93	100	25	100
75320b12200 <sup>(2)</sup>	M12x200	93	115	20	80
75320b12220 <sup>(2)</sup>	M12x220	93	135	20	80
75320b12240 <sup>(2)</sup>	M12x240	93	155	20	80
75320b12255 <sup>(2)</sup>	M12x255	93	170	20	80
75320b12285 <sup>(2)</sup>	M12x285	93	200	20	80
75320b12300 <sup>(2)</sup>	M12x300	93	215	20	80
75320b12325 <sup>(2)</sup>	M12x325	93	240	20	80
75320b12355 <sup>(2)</sup>	M12x355	93	270	20	-
75320b14100	M14x100	50	3	25	100
75320b14110	M14x110	60	10	25	100
75320b14130	M14x130	65	30	25	100
75320b14150	M14x150	90	50	25	100
75320b14170	M14x170	90	70	25	100
75320b14200	M14x200	90	100	25	100
75320b16110 <sup>(1)(2)</sup>	M16x110	53	15	20	80
75320b16125	M16x125	68	10	20	80
75320b16145	M16x145	88	30	20	80
75320b16175	M16x175	88	60	20	80
75320b16215	M16x215	88	100	15	60
75320b16230 <sup>(2)</sup>	M16x230	88	115	10	40
75320b16250 <sup>(2)</sup>	M16x250	88	135	10	40
75320b16270 <sup>(2)</sup>	M16x270	88	155	10	40
75320b16285 <sup>(2)</sup>	M16x285	88	170	10	40
75320b16320 <sup>(2)</sup>	M16x320	88	205	10	40
75320b20170 <sup>(2)</sup>	M20x170	60	30	10	40
75320b20215 <sup>(2)</sup>	M20x215	60	75	10	40
75320b20260 <sup>(2)</sup>	M20x260	60	120	10	-
75320b24160 <sup>(1)(2)</sup>	M24x160	60	10	10	40
75320b24180 <sup>(2)</sup>	M24x180	60	10	10	40
75320b24200 <sup>(2)</sup>	M24x200	80	30	10	-
75320b24220 <sup>(2)</sup>	M24x220	100	50	10	-
75320b24260 <sup>(2)</sup>	M24x260	100	90	10	-
75320b24310 <sup>(2)</sup>	M24x310	100	140	10	-

\* Su richiesta è disponibile la versione con  
rondella larga DIN 9021.  
Per informazioni contattare gli uffici  
commerciali.

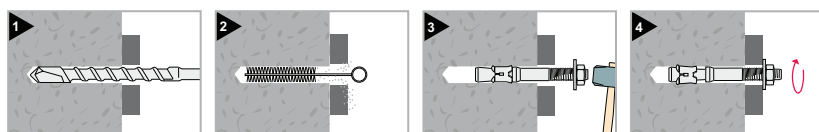
\* Large washer DIN 9021 version is available  
upon request.  
For information contact the Export office.

<sup>(1)</sup> Ancoranti con profondità di posa ridotta  
Anchors with reduced embedment depths

<sup>(2)</sup> Misure non certificate CE  
Size not covered by CE certification

## FM-753 3DG

**Ancorante pesante passante**  
**Heavy duty through anchor**



**3DG** **FIX**  
**COATING** **CALC**



**CERTIFICAZIONI**  
**CERTIFICATIONS**

**Calcestruzzo non fessurato**  
**Non-cracked concrete**

**Assemblato**

**Fascetta inox A4**

**Speciale rivestimento anticorrosione**  
**con finitura opaca**

**Assembled**

**Stainless steel A4 clip**

**Special anti-corrosion coating**  
**with matte finish**

Cod.	Dim. Ø x L	Lunghezza filetto Thread length	Sp. fissabile per posa / Fixing thickness		Conf. Pkg.	Imballo Outerbox
			Ridotta Reduced	Standard Standard		
75320c06045	M6x45	20	3	-	200	2000
75320c06065	M6x65	40	20	15	100	1000
75320c06085	M6x85	60	40	35	100	1000
75320c06100	M6x100	60	55	50	50	500
75320c08050	M8x50	23	5	-	100	1000
75320c08065	M8x65	38	15	7	100	1000
75320c08075	M8x75	48	25	15	100	400
75320c08090	M8x90	63	40	30	100	400
75320c08115	M8x115	83	65	55	100	400
75320c08135	M8x135	88	85	75	100	400
75320c08165	M8x165	88	115	105	50	200
75320c10060	M10x60	28	5	-	50	500
75320c10075	M10x75	43	20	5	50	500
75320c10090	M10x90	55	35	20	50	200
75320c10100	M10x100	60	45	30	50	200
75320c10120	M10x120	85	65	50	50	200
75320c10145	M10x145	85	90	75	50	200
75320c10170	M10x170	85	115	100	25	100
75320c10210	M10x210	85	155	140	25	100
75320c12080	M12x80	40	7	-	50	200
75320c12100	M12x100	58	25	10	50	200
75320c12110	M12x110	68	35	20	50	200
75320c12135	M12x135	93	60	45	25	100
75320c12160	M12x160	93	85	70	25	100
75320c12185	M12x185	93	115	100	25	100
75320c12200	M12x200	93	130	115	20	80
75320c12220	M12x220	93	150	135	20	80
75320c12240	M12x240	93	170	155	20	80
75320c12255	M12x255	93	185	170	20	80
75320c12285	M12x285	93	215	200	20	80
75320c12300	M12x300	93	230	215	20	80
75320c12325	M12x325	93	255	240	20	80
75320c16110	M16x110	53	15	-	20	80
75320c16125	M16x125	68	30	10	20	80
75320c16145	M16x145	88	50	30	20	80
75320c16175	M16x175	88	80	60	20	80
75320c16215	M16x215	88	120	100	15	60
75320c16230	M16x230	88	135	115	10	40
75320c16250	M16x250	88	155	135	10	40
75320c16270	M16x270	88	175	155	10	40
75320c16320	M16x320	88	225	205	10	40
75320c20170	M20x170	60	-	30	10	40
75320c20215	M20x215	60	-	75	10	40
75320c20280	M20x280	60	-	140	10	40

**Speciale rivestimento anticorrosione**  
**resistenza alla corrosione in nebbia**  
**salina fino a 1000 ore**

**Special anti-corrosion coating**  
**up to 1000 hours in salt spray test**

Vedi/See p. 6-7

**3DG** **COATING**

**TRIPLE DIFFUSION GALVANIZATION**

[www.friulsider.com](http://www.friulsider.com)

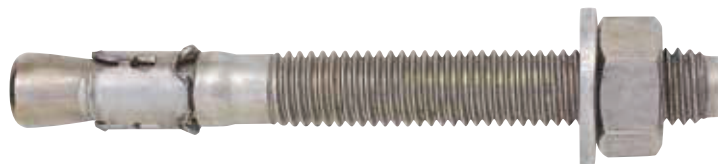
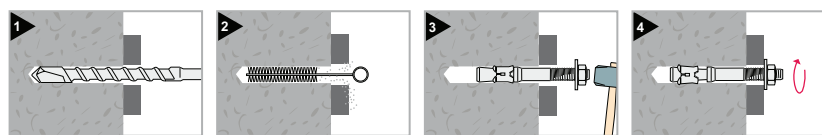
**FRIULSIDER**

**33**

2022

## FM-753 INOX A4

**Ancorante pesante passante**  
Heavy duty through anchor



**CERTIFICAZIONI**  
CERTIFICATIONS

**Calcestruzzo non fessurato**  
Non-cracked concrete

**Assemblato**  
**Inox A4**

Assembled  
Stainless steel A4

Cod.	Dim. Ø x L	Lunghezza filetto Thread length	Sp. fissabile Fixing thickness max	Conf. Pkg.	Imballo Outerbox
75320006065 <sup>(2)</sup>	M6x65	40	15	100	1000
75320006085 <sup>(2)</sup>	M6x85	60	35	100	1000
75320008050 <sup>(1)(2)</sup>	M8x50	23	5	100	1000
75320008065	M8x65	38	7	100	1000
75320008075	M8x75	48	15	100	400
75320008090	M8x90	63	30	100	400
75320008115	M8x115	83	55	100	400
75320008135	M8x135	88	75	50	200
75320008165	M8x165	88	105	50	200
75320010060 <sup>(1)(2)</sup>	M10x60	28	5	50	500
75320010075	M10x75	43	5	50	500
75320010090	M10x90	55	20	50	200
75320010120	M10x120	85	50	50	200
75320012080 <sup>(1)(2)</sup>	M12x80	40	7	50	200
75320012100	M12x100	58	10	50	200
75320012110	M12x110	68	20	50	200
75320012135	M12x135	93	45	25	100
75320012160	M12x160	93	70	25	100
75320012185	M12x185	93	100	25	100
75320016110 <sup>(1)(2)</sup>	M16x110	53	15	20	80
75320016125	M16x125	68	10	20	80
75320016145	M16x145	88	30	20	80
75320016175	M16x175	88	60	20	80

<sup>(1)</sup> Ancoranti con profondità di posa ridotta / Anchors with reduced embedment depths

<sup>(2)</sup> Misure non certificate CE / Size not covered by CE certification

Download:  
[www.friulsider.com](http://www.friulsider.com)

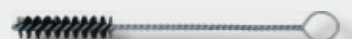


**FIXCALC**  
ENGINEERING SOFTWARE



INS p. 205

**CONSIGLI**  
**PER GLI**  
**ACQUISTI**  
**WE ALSO**  
**RECOMMEND**

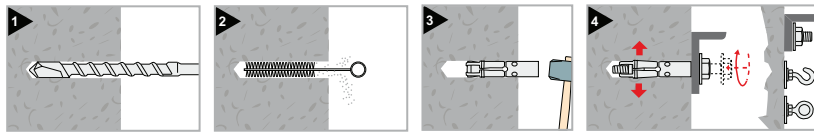


SCO p. 59



# FM-744

**Ancorante pesante a quattro settori**  
Heavy duty four segments shield anchor



**CERTIFICAZIONI**  
CERTIFICATIONS

**Calcestruzzo non fessurato**  
Non-cracked concrete



**Solo tassello**  
**Zincato bianco**

Anchor only  
White zinc plated

Cod.	Tassello Plug Ø x L	Per viti For screw	Conf. Pkg.	Imballo Outerbox
74400b10040	10x40	M6	50	500
74400b14050	14x50	M8	50	500
74400b16060	16x60	M10	25	250
74400b20080	20x80	M12	20	200

Articolo certificato con viti TE DIN933 cl.8.8 e rondella DIN125-1  
Certified product when coupled with hex head screw DIN933 grade 8.8 and washer DIN125-1



**Vite TE cl. 8.8**  
**Zincato bianco**

Hex head screw grade 8.8  
White zinc plated

Cod.	Tassello Plug Ø x L	Vite TE Hex head screw Ø x L	Conf. Pkg.	Imballo Outerbox
74411b10040	10x40	M6x50	50	500
74411b14050	14x50	M8x60	50	250
74411b16060	16x60	M10x80	25	125
74411b20080	20x80	M12x90	20	100



**Barra filettata cl. 5.8**  
**Zincato bianco**

Threaded bar grade 5.8  
White zinc plated

Cod.	Tassello Plug Ø x L	Barra Bar Ø x L	Conf. Pkg.	Imballo Outerbox
74412b10040	10x40	M6x65	50	500
74412b14050	14x50	M8x75	50	250
74412b16060	16x60	M10x95	25	125
74412b20080	20x80	M12x115	20	100

Codici non certificati CE / Codes not covered by CE certification



**Gancio forgiato**  
**Zincato bianco**

Forged cup hook  
White zinc plated

Cod.	Tassello Plug Ø x L	Gancio Cup hook	Gancio interno Int. cup hook Ø	Conf. Pkg.	Imballo Outerbox
74413b10040	10x40	M6	9,5	50	500
74413b14050	14x50	M8	11	50	250
74413b16060	16x60	M10	14	25	125
74413b20080	20x80	M12	16	20	80

Codici non certificati CE / Codes not covered by CE certification



**Occhio forgiato**  
**Zincato bianco**

Forged eye  
White zinc plated

Cod.	Tassello Plug Ø x L	Occhio Eye	Occhio interno Int. eye Ø	Conf. Pkg.	Imballo Outerbox
74414b10040	10x40	M6	10	50	500
74414b14050	14x50	M8	11,5	50	250
74414b16060	16x60	M10	14,5	25	125
74414b20080	20x80	M12	17	20	80

Codici non certificati CE / Codes not covered by CE certification

# FMMP3 EVO

**ANCORANTE  
PESANTE PASSANTE  
A TRE SETTORI  
HEAVY DUTY THREE  
SEGMENT THROUGH  
ANCHOR**



✓  
**L'UNIVERSALE METALLICO ANCHE PER  
SUPPORTI FORATI  
UNIVERSAL METALLIC ANCHOR EVEN  
FOR HOLLOW BASE MATERIALS**

✓  
**CORPO MONOLITICO  
SINGLE SHELL BODY**

✓  
**ESCLUSIVO SISTEMA  
DI AGGANCIO CONO  
EXCLUSIVE CONE CONTAINING SYSTEM**

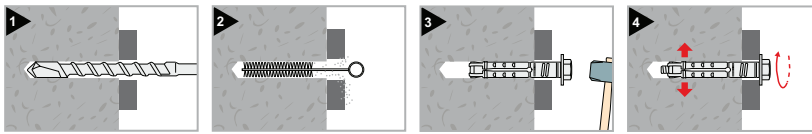


**FRIULSIDER**  
YOUR FIXING FACTORY



# FM-MP3 evo LONG

**Ancorante pesante passante a tre settori**  
Heavy duty three segments through anchor



**CERTIFICAZIONI**  
**CERTIFICATIONS**

**Calcestruzzo non fessurato**

Non-cracked concrete

**Fissaggio multiplo per applicazioni non strutturali su calcestruzzo fessurato e non fessurato**

Multiple use for non-structural applications on cracked and non-cracked concrete

**Resistenza al fuoco R120**

Fire resistance R120

**Vite TE cl. 8.8**  
**Zincato bianco**

Hex head screw grade 8.8  
White zinc plated



Cod.	Tassello Plug Ø x L	Vite TE Hex head screw Ø x L	Sp. fissabile Fixing thickness max	Conf. Pkg.	Imballo Outerbox
73310b10070	10x70	M6x70	25	50	500
73310b12075	12x75	M8x80	25	50	250
73310b15085	15x85	M10x90	25	25	125
73310b18105	18x105	M12x110	25	20	100

**Vite TPSEI cl. 8.8**  
**Zincato bianco**

Hex socket countersunk head screw grade 8.8  
White zinc plated



Cod.	Tassello Plug Ø x L	Vite Screw Ø x L	Sp. fissabile Fixing thickness max	Chiave Wrench	Conf. Pkg.	Imballo Outerbox
73311b10070	10x70	M6x75	30	5	50	500
73311b12075	12x75	M8x80	30	6	50	250
73311b15085	15x85	M10x90	30	8	25	125
73311b18105	18x105	M12x110	30	10	20	100

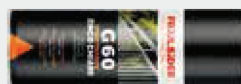


**FIXCALC**  
ENGINEERING SOFTWARE

Download:  
[www.friulsider.com](http://www.friulsider.com)



INS p.205



G60 p.85

**CONSIGLI PER GLI ACQUISTI**  
WE ALSO RECOMMEND

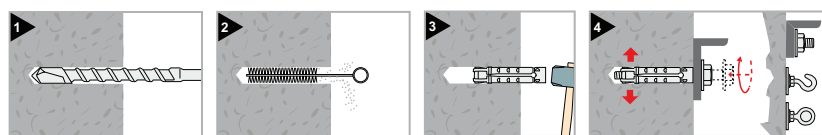


FM-MP3 evo SAFER p.93



## FM-MP3 evo

**Ancorante pesante a tre settori**  
Heavy duty three segments anchor



### CERTIFICAZIONI CERTIFICATIONS

**Calcestruzzo non fessurato**  
Non-cracked concrete

**Fissaggio multiplo per applicazioni non strutturali su calcestruzzo fessurato e non fessurato**  
Multiple use for non-structural applications on cracked and non-cracked concrete

**Resistenza al fuoco R120**  
Fire resistance R120

**Solo tassello**  
**Zincato bianco**

Anchor only  
White zinc plated



Cod.	Tassello Plug Ø x L	Per viti For screw	Conf. Pkg.	Imballo Outerbox
73300b10045	10x45	M6	50	500
73300b12050	12x50	M8	50	500
73300b15060	15x60	M10	25	250
73300b18080	18x80	M12	20	200

Articolo certificato con vite TE DIN933 cl.8.8 e rondella DIN125-1  
Certified product when coupled with hex head screw DIN933 grade 8.8 and washer DIN125-1



**Vite TE cl. 8.8**  
**Zincato bianco**

Hex head screw grade 8.8  
White zinc plated

Cod.	Tassello Plug Ø x L	Vite TE Hex head screw Ø x L	Conf. Pkg.	Imballo Outerbox
73301b10045	10x45	M6x50	50	500
73301b12050	12x50	M8x60	50	250
73301b15060	15x60	M10x80	25	125
73301b18080	18x80	M12x100	20	100



**Vite TE cl. 8.8**  
**Rondella maggiorata**  
**Zincato bianco**

Hex head screw grade 8.8  
Large washer  
White zinc plated

Cod.	Tassello Plug Ø x L	Vite TE Hex head screw Ø x L	Rondella Washer Ø	Conf. Pkg.	Imballo Outerbox
73307b10045	10x45	M6x50	18	50	500
73307b12050	12x50	M8x60	20	50	500
73307b15060	15x60	M10x80	25	25	250
73307b18080	18x80	M12x100	30	20	100

Codici non certificati CE / Codes not covered by CE certification




**Barra filettata cl. 5.8**  
**Zincato bianco**

 Threaded bar grade 5.8  
 White zinc plated

Cod.	Tassello Plug Ø x L	Barra Bar Ø x L	Conf. Pkg.	Imballo Outerbox
73302b10045	10x45	M6x65	50	500
73302b12050	12x50	M8x75	50	250
73302b15060	15x60	M10x95	25	125
73302b18080	18x80	M12x115	20	100

Codici non certificati CE / Codes not covered by CE certification


**Gancio forgiato**  
**Zincato bianco**

 Forged cup hook  
 White zinc plated

Cod.	Tassello Plug Ø x L	Gancio Cup hook	Gancio interno Int. cup hook Ø	Conf. Pkg.	Imballo Outerbox
73303b10045	10x45	M6	9,5	50	500
73303b12050	12x50	M8	11	50	250
73303b15060	15x60	M10	14	25	125
73303b18080	18x80	M12	16	20	80

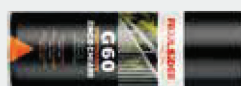
Codici non certificati CE / Codes not covered by CE certification

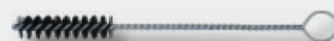

**Occhiolo forgiato**  
**Zincato bianco**

 Forged eye  
 White zinc plated

Cod.	Tassello Plug Ø x L	Occhiolo Eye	Occhiolo interno Int. eye Ø	Conf. Pkg.	Imballo Outerbox
73304b10045	10x45	M6	10	50	500
73304b12050	12x50	M8	11,5	50	250
73304b15060	15x60	M10	14,5	25	125
73304b18080	18x80	M12	17	20	80

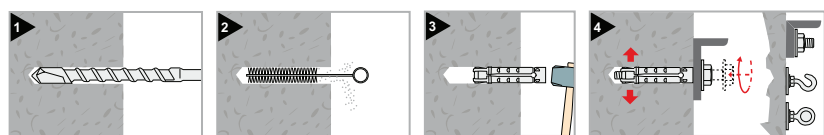
Codici non certificati CE / Codes not covered by CE certification


**INS** p. 205

**G60** p. 85

**CONSIGLI  
PER GLI  
ACQUISTI**
**WE ALSO  
RECOMMEND**

**SCO** p. 59

## FM-MP3 evo INOX A4

**Ancorante pesante a tre settori**  
Heavy duty three segments anchor



### CERTIFICAZIONI CERTIFICATIONS

**Calcestruzzo non fessurato**  
Non-cracked concrete

**Fissaggio multiplo per applicazioni non strutturali su calcestruzzo fessurato e non fessurato**

Multiple use for non-structural applications on cracked and non-cracked concrete

**Resistenza al fuoco R120**  
Fire resistance R120

**Solo tassello**  
**Inox A4**

Anchor only  
Stainless steel A4



Cod.	Tassello Plug Ø x L	Per viti For screw	Conf. Pkg.	Imballo Outerbox
73300010045	10x45	M6	50	500
73300012050	12x50	M8	50	500
73300015060	15x60	M10	25	250
73300018080	18x80	M12	20	200

Articolo certificato con vite TE inox A4-70 e rondella inox A4 DIN125-1 o ISO 7089 / Certified product when coupled with stainless steel A4-70 hex head screw DIN933 and stainless steel A4 washer DIN125-1 or ISO 7089



**Vite TE**  
**Inox A4-70**

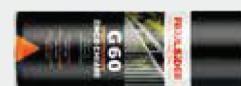
Hex head screw  
Stainless steel A4-70

Cod.	Tassello Plug Ø x L	Vite TE Hex head screw Ø x L	Conf. Pkg.	Imballo Outerbox
73301010045	10x45	M6x50	50	500
73301012050	12x50	M8x60	50	250
73301015060	15x60	M10x80	25	125
73301018080	18x80	M12x100	20	100

Download:  
[www.friulsider.com](http://www.friulsider.com)



**FIXCALC**  
ENGINEERING SOFTWARE

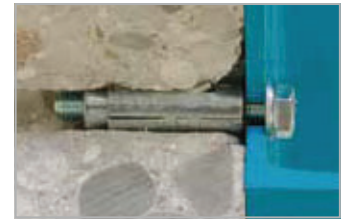
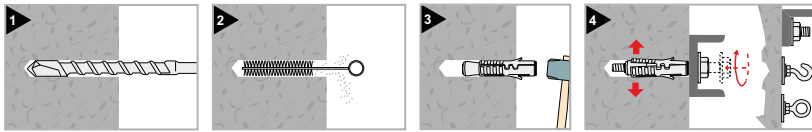




# TDS

## Ancorante medio pesante a due schermature

Medium heavy duty two segment shield anchor



### Solo tassello

### Zincato bianco

Anchor only  
White zinc plated

Cod.	Tassello Plug Ø x L	Per viti For screw	Conf. Pkg.	Imballo Outerbox
77900b12050	12x50	M6	50	500
77900b14055	14x55	M8	50	500
77900b16065	16x65	M10	25	250
77900b20080	20x80	M12	20	200



### Vite TE cl. 8.8

### Zincato bianco

Hex head screw grade 8.8  
White zinc plated

Cod.	Tassello Plug Ø x L	Vite TE Hex head screw Ø x L	Conf. Pkg.	Imballo Outerbox
78000b12050	12x50	M6x50	50	500
78000b14055	14x55	M8x60	50	250
78000b16065	16x65	M10x80	25	125
78000b20080	20x80	M12x90	20	100



### Barra filettata cl. 5.8

### Zincato bianco

Threaded bar grade 5.8  
White zinc plated

Cod.	Tassello Plug Ø x L	Barra Bar Ø x L	Conf. Pkg.	Imballo Outerbox
78100b12050	12x50	M6x65	50	500
78100b14055	14x55	M8x75	50	250
78100b16065	16x65	M10x95	25	125
78100b20080	20x80	M12x115	20	100



### Gancio forgiato

### Zincato bianco

Forged cup hook  
White zinc plated

Cod.	Tassello Plug Ø x L	Gancio Cup hook	Gancio interno Int. cup hook Ø	Conf. Pkg.	Imballo Outerbox
78200b12050	12x50	M6	9,5	50	500
78200b14055	14x55	M8	11	50	200
78200b16065	16x65	M10	14	25	125
78200b20080	20x80	M12	16	15	60



### Occhio forgiato

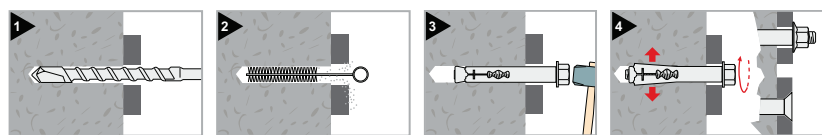
### Zincato bianco

Forged eye  
White zinc plated

Cod.	Tassello Plug Ø x L	Occhio Eye	Occhio interno Int. eye Ø	Conf. Pkg.	Imballo Outerbox
78300b12050	12x50	M6	10	50	500
78300b14055	14x55	M8	11,5	50	250
78300b16065	16x65	M10	14,5	25	125
78300b20080	20x80	M12	17	15	75

## TSA-PATTEN

Ancorante in lamiera avvolta  
Metal sleeve anchor



**Vite TE cl. 8.8**  
**Zincato bianco**

Hex head screw grade 8.8  
White zinc plated



Cod.	Tipo Type	Tassello Plug Ø x L	Vite Screw	Sp. fissabile Fixing thickness max	Conf. Pkg.	Imballo Outerbox
79602b08045	TSA 8/08	8x45	M6	8	100	1000
79602b08060	TSA 8/23	8x60	M6	23	100	800
79602b08080	TSA 8/43	8x80	M6	43	50	500
79602b08100	TSA 8/63	8x100	M6	63	50	400
79602b08120	TSA 8/83	8x120	M6	83	25	300
79602b08140	TSA 8/103	8x140	M6	103	25	300
79602b08160	TSA 8/123	8x160	M6	123	20	240
79602b10060	TSA 10/15	10x60	M8	15	50	400
79602b10080	TSA 10/35	10x80	M8	35	50	300
79602b10100	TSA 10/55	10x100	M8	55	25	250
79602b10120	TSA 10/75	10x120	M8	75	20	200
79602b10140	TSA 10/95	10x140	M8	95	20	240
79602b10160	TSA 10/115	10x160	M8	115	20	240
79602b12070	TSA 12/17	12x70	M10	17	50	200
79602b12100	TSA 12/47	12x100	M10	47	25	200
79602b12130	TSA 12/77	12x130	M10	77	20	120
79602b12150	TSA 12/97	12x150	M10	97	10	120
79602b16070	TSA 16/03	16x70	M12	3	10	100
79602b16110	TSA 16/40	16x110	M12	40	10	100
79602b16150	TSA 16/80	16x150	M12	80	5	60



**Vite TPSEI cl. 8.8**  
**Zincato bianco**

Hex socket countersunk head  
screw grade 8.8  
White zinc plated

Cod.	Tipo Type	Tassello Plug Ø x L	Filettatura Thread	Sp. fissabile Fixing thickness max	Conf. Pkg.	Imballo Outerbox
79603b08060	TSA 8/28	8x60	M6	28	100	1000
79603b08080	TSA 8/48	8x80	M6	48	50	800
79603b08100	TSA 8/68	8x100	M6	68	50	500
79603b10060	TSA 10/20	10x60	M8	20	50	500
79603b10080	TSA 10/40	10x80	M8	40	50	300
79603b10100	TSA 10/60	10x100	M8	60	25	400
79603b10120	TSA 10/80	10x120	M8	80	20	320
79603b12070	TSA 12/22	12x70	M10	22	50	300
79603b12100	TSA 12/52	12x100	M10	52	25	250



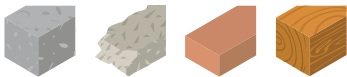
**Dado flangiato**  
**Zincato bianco**

Flanged nut  
White zinc plated

Cod.	Tipo Type	Tassello Plug Ø x L	Filettatura Thread	Sp. fissabile Fixing thickness max	Conf. Pkg.	Imballo Outerbox
79600b08040	TSA 8/05	8x40	M6	5	100	1000
79600b08065	TSA 8/30	8x65	M6	30	50	500
79600b10050	TSA 10/10	10x50	M8	10	50	500
79600b10077	TSA 10/37	10x77	M8	37	50	400
79600b10097	TSA 10/57	10x97	M8	57	25	250
79600b12075	TSA 12/25	12x75	M10	25	25	250
79600b12099	TSA 12/49	12x99	M10	49	20	200
79600b12129	TSA 12/79	12x129	M10	79	20	160
79600b16065	TSA 16/10	16x65	M12	10	20	200
79600b16111	TSA 16/56	16x111	M12	56	10	100
79600b16147	TSA 16/92	16x147	M12	92	10	120

**TO**

**Tassello in ottone**  
Brass anchor



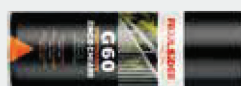
**Tassello in ottone con zigrinatura**

Brass anchor with knurling

Cod.	Tassello Plug Ø x L	Filettatura Thread	Conf. Pkg.
75100004000	5x15	M4	200
75100005000	6,5x20	M5	200
75100006000	8x23	M6	200
75100008000	10x28	M8	100
75100010000	12x32	M10	100
75100012000	15x38	M12	100
75100014000	18x42	M14	50



**INS** p. 205



**G60** p. 85

**CONSIGLI  
PER GLI  
ACQUISTI**

**WE ALSO  
RECOMMEND**



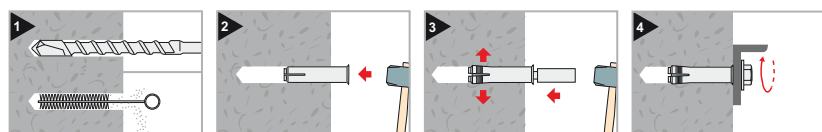
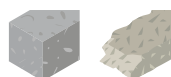
**VCC / VCS / VSS** p. 278-279



# TAP

## Tassello a percussione con bordo svasato

Rimmed hammerset anchor



### CERTIFICAZIONI CERTIFICATIONS

#### Calcestruzzo non fessurato

Non-cracked concrete

#### Fissaggio multiplo per applicazioni non strutturali su calcestruzzo fessurato e non fessurato

Multiple use for non-structural applications on cracked and non-cracked concrete

#### Resistenza al fuoco R120

Fire resistance R120

#### Zincato bianco

White zinc plated



Cod.	Tassello Plug Ø x L	Filettatura Thread	Conf. Pkg.	Imballo Outerbox
75205b06000 <sup>(2)</sup>	8x25	M6	100	2000
75205b08000 <sup>(1)(2)</sup>	10x30	M8	100	1000
75205b10030 <sup>(2)</sup>	12x30	M10	100	600
75205b10000 <sup>(1)(2)</sup>	12x40	M10	100	600
75205b12000 <sup>(1)(2)</sup>	15x50	M12	50	300
75205b16000 <sup>(1)</sup>	20x65	M16	25	150



#### Inox A2

Stainless steel A2



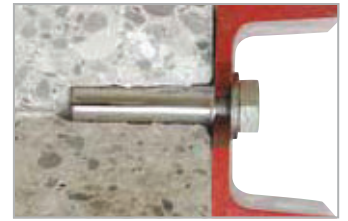
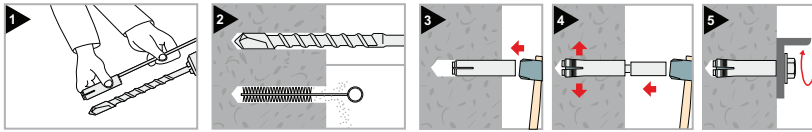
Cod.	Tassello Plug Ø x L	Filettatura Thread	Conf. Pkg.	Imballo Outerbox
75204006000▲	8x25	M6	100	2000
75204008000▲	10x30	M8	100	1000
75204010000▲	12x40	M10	100	600
75204012000▲	15x50	M12	50	300

Codici non certificati CE / Codes not covered by CE certification



## TAP

**Tassello a percussione**  
Hammer-set anchor



**Senza bordo**  
**Zincato bianco**

Rimless plug  
White zinc plated

Cod.	Tassello Plug Ø x L	Filettatura Thread	Conf. Pkg.	Imballo Outerbox
75200b06000	8x25	M6	100	2000
75200b08000	10x30	M8	100	1000
75200b10000	12x40	M10	100	600
75200b12000	15x50	M12	50	300
75200b16000	20x65	M16	25	150

Codici non certificati CE / Codes not covered by CE certification

## TAP

**Perno espansore**  
Setting tool



Cod.	Perno espansore per Setting tool for	Conf. Pkg.
49902b06000	M6	1
49902b08000	M8	1
49902b10000	M10	1
49902b12000	M12	1
49902b16000	M16	1

